

SPORT
HUNTER

1825

OPERATING GUIDE
PLEASE READ THIS ENTIRE GUIDE BEFORE BEGINNING

Thank you for choosing SportDOG Brand.® Used properly, this product will help you train your dog efficiently and safely. To ensure your satisfaction, please review this owner's manual thoroughly. If you have questions regarding this product's operation, please see this manual's Frequently Asked Questions or Troubleshooting section, contact our Customer Care Center at 1-800-732-0144, or visit our website at www.sportdog.com.

To get the most protection out of your warranty, please register your product within 30 days at www.sportdog.com. By registering, and keeping your receipt you will enjoy the product's full warranty and should you ever need to call the Customer Care Center, we will be able to help you faster. Most importantly, SportDOG™ will never give or sell your valuable information to anyone. Complete warranty information is available online at www.sportdog.com.

TABLE OF CONTENTS

| | |
|--|----|
| COMPONENTS | 3 |
| HOW THE SYSTEM WORKS..... | 3 |
| KEY DEFINITIONS..... | 4 |
| PREPARE THE REMOTE TRANSMITTER..... | 5 |
| PREPARE THE COLLAR RECEIVER..... | 6 |
| FIT THE COLLAR RECEIVER..... | 8 |
| FIND THE BEST INTENSITY LEVEL FOR YOUR DOG..... | 8 |
| CHANGING STIMULATION RANGES | 9 |
| GENERAL TRAINING TIPS | 9 |
| PROGRAM THE REMOTE TRANSMITTER | 10 |
| MATCH THE COLLAR RECEIVER AND REMOTE TRANSMITTER..... | 13 |
| PROGRAM THE SYSTEM FOR TWO-DOG OPERATION | 13 |
| PROGRAM THE SYSTEM FOR THREE AND SIX-DOG OPERATION | 14 |
| FREQUENTLY ASKED QUESTIONS..... | 15 |
| TROUBLESHOOTING | 16 |
| TEST LIGHT INSTRUCTIONS..... | 17 |
| TERMS OF USE AND LIMITATION OF LIABILITY..... | 17 |
| FCC COMPLIANCE | 18 |
| BATTERY DISPOSAL | 19 |
| SPORTDOG™ ADD-A-DOG® RECEIVERS | 20 |

COMPONENTS



HOW THE SYSTEM WORKS

The SportDOG™ SportHunter® 1825 has been proven safe, comfortable and effective for all dogs over 8 pounds. Consistent, correct use of this product allows you to reinforce commands and correct misbehavior from one mile. The Remote Transmitter sends a signal, activating the Collar Receiver to deliver a harmless stimulation. With proper training, a dog will learn to associate this signal with a command. Like all SportDOG products, this model features adjustable stimulation levels so you can tailor the stimulation level to your dog's temperament, eliminating the risk of over-correction.

IMPORTANT: THE SPORHUNTER 1825 HAS A RANGE OF ONE MILE. DEPENDING ON THE WAY YOU HOLD THE REMOTE TRANSMITTER, THE MAXIMUM RANGE MAY VARY. FOR CONSISTENT RESULTS AT LONGER RANGES, HOLD THE REMOTE TRANSMITTER IN A VERTICAL POSITION AWAY FROM YOUR BODY AND ABOVE YOUR HEAD. TERRAIN, WEATHER, VEGETATION, TRANSMISSION FROM OTHER RADIO DEVICES, AND OTHER FACTORS WILL AFFECT THE MAXIMUM RANGE.



KEY DEFINITIONS

REMOTE TRANSMITTER



REMOTE TRANSMITTER: Transmits the radio signal to the Collar Receiver. It is waterproof and can be submerged in water to a depth of 25 feet.

INTENSITY DIAL: Provides multiple levels of stimulation so you can match the correction to your dog's temperament.

TRANSMITTER INDICATOR LIGHT: Indicates that a button is pressed and also serves as a low-battery indicator.

TOGGLE SWITCH: This switch is factory-set so that the Remote Transmitter can control two Collar Receivers.

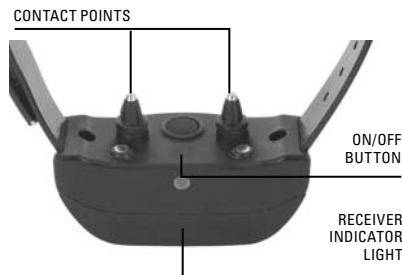
UPPER BUTTON: This button is factory-set to deliver continuous stimulation.

LOWER BUTTON: This button is factory-set to deliver momentary stimulation, or a "Nick."

SIDE BUTTON: This button is factory-set to deliver a tone without stimulation.

CHARGING JACK: For connecting the charger. Although the Remote Transmitter is waterproof without it, keep the cover in place when not charging to keep debris out of the opening.

COLLAR RECEIVER



COLLAR RECEIVER: Receives the radio signal from the Remote Transmitter and delivers the stimulation, vibration and/or a tone for correcting your dog. It is waterproof and can be submerged in water to a depth of 25 feet.

RECEIVER INDICATOR LIGHT: Indicates when the Collar Receiver has been turned on or off and also serves as a low-battery indicator.

CONTACT POINTS: The contacts through which the Collar Receiver delivers stimulation.

ON/OFF BUTTON: Momentarily pressing and releasing this button turns the Collar Receiver on and off.

THE COLLAR RECEIVER IS CAPABLE OF DELIVERING FOUR TYPES OF STIMULATION VIA THE CONTACT POINTS:

CONTINUOUS: You control both when and how long stimulation is delivered, up to a maximum of 10 seconds. After 10 seconds, the stimulation will "time out" and the Transmitter button needs to be released and then pressed again before additional stimulation can be delivered.

MOMENTARY (NICK): Stimulation is delivered for 1/10 of a second, regardless of how long the button is pressed.

tone: The Collar Receiver will make a rapid beeping noise when a Tone button is pressed, up to a maximum of 10 seconds.

VIBRATION: The Collar Receiver will vibrate when a Vibration button is pressed, up to a maximum of 10 seconds.

STEP :: 01

PREPARE THE REMOTE TRANSMITTER

CHARGE THE REMOTE TRANSMITTER

1. Lift the rubber cover protecting the Charging Jack.
2. Connect one of the charger connectors to the Charging Jack.
3. Plug the charger into a standard 120-volt AC wall outlet.
4. Charge the Remote Transmitter for 2 hours for the first charge and every charge thereafter.

Using Li-Ion technology, the Remote Transmitter only requires a 2 hour charge. It is not harmful to let the unit charge for more than 2 hours.

5. When charging is complete, replace the rubber cover.

NOTE: Approximate battery life between charges is 40 to 60 hours, depending on frequency of use.



TRANSMITTER INDICATOR LIGHT

| OPERATIONAL MODE | LIGHT COLOR | BATTERY STATUS | LIGHT FUNCTION |
|--|-------------|----------------|--|
| Continuous stimulation or Tone only button pressed | Green | Good | Light is solid in color while button is pressed |
| Continuous stimulation or Tone only button pressed | Red | Low | Light is solid in color while button is pressed |
| Momentary stimulation button pressed | Green | Good | Light flashes once and turns off |
| Momentary stimulation button pressed | Red | Low | Light flashes once and turns off |
| Unit is charging | Red | Low | Light is solid in color while on the charger |
| Unit is fully charged (charger still connected) | Green | Good | Light flashes once per second once the battery is completely charged |

STEP :: 02

PREPARE THE COLLAR RECEIVER

CHARGE THE COLLAR RECEIVER

1. Place Collar Receiver in Charging Cradle as shown.
2. Place the charger connector into the back of the Charging Cradle.
3. Plug the charger into a standard 120-volt AC wall outlet.
4. Charge the Collar Receiver for 2 hours for the first charge and every charge thereafter.



Using Li-Ion technology, the Collar Receiver only requires a 2 hour charge. It is not harmful to let the unit charge for more than 2 hours.

CHARGE CRADLE INDICATOR LIGHT

| OPERATIONAL MODE | LIGHT COLOR | LIGHT FUNCTION |
|--|-------------|--|
| No Collar Receiver on the Charging Cradle but charger is connected | Green | Light is solid in color |
| Unit is charging | Red | Light is solid in color while charging |
| Unit is fully charged (Collar Receiver on Charging Cradle) | Green | Light flashes once per second once the battery is completely charged |

TO TURN THE COLLAR RECEIVER ON:

Press and release the On/Off Button when the Receiver Indicator Light comes on. The Collar Receiver will beep 1 to 3 times depending on what stimulation range is chosen. The default is 2 or medium.



TO TURN THE COLLAR RECEIVER OFF:

Press and release the On/Off Button when the Receiver Indicator Light comes on solid (red) and the Collar Receiver beeps for 2 seconds.

To extend the life between charging cycles, turn the Collar Receiver off when it is not in use.

NOTE: Approximate battery life between charges is 40 to 60 hours, depending on frequency of use.

RECEIVER INDICATOR LIGHT

| OPERATIONAL MODE | LIGHT COLOR | LIGHT FUNCTION | BATTERY STATUS | SPEAKER FUNCTION | VIBRATION |
|---|-------------|--|----------------|---|--|
| Unit is turned on via On/Off Button | Green | Light is solid in color during beep sequence | Good | Beeps 1-3 times depending on stimulation range setting (2 is the default setting). Please see page 9. | N/A |
| Unit is turned on via On/Off Button | Red | Light is solid in color during beep sequence | Low | | |
| Unit is turned off via On/Off Button | Red | Light is solid in color during beep sequence | N/A | Beeps for 2 seconds | N/A |
| Unit is on | Green | Light flashes every 2 seconds | Good | N/A | N/A |
| Unit is on | Red | Light flashes every 2 seconds | Low | N/A | N/A |
| Unit is delivering continuous stimulation | Red | Light is solid in color for as long as button is pressed | N/A | N/A | N/A |
| Unit is delivering momentary stimulation | Red | Light will quickly flash once no matter how long button is pressed | N/A | N/A | N/A |
| Unit is delivering tone | Off | N/A | N/A | Unit will beep for as long as button is pressed | N/A |
| Unit is delivering vibration | Off | N/A | N/A | N/A | Unit will vibrate for as long as button is pressed |

RECHARGEABLE BATTERIES

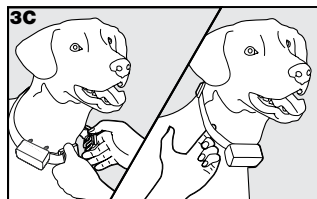
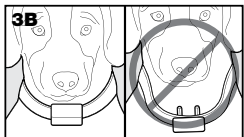
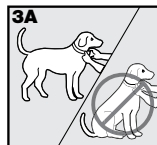
- The rechargeable Lithium Ion (Li-Ion) batteries are not memory sensitive, do not require depletion before charging and cannot be over charged.
- The batteries come partially charged from the factory, but will require a full charge before the first use.
- Remember - Always keep batteries away from flame.
- **When storing the unit for long periods, remember to regularly give batteries a full charge. This should be done once every 3 to 4 months.**
- You should expect hundreds of recharge cycles from your batteries. However, all rechargeable batteries lose capacity over time relative to the number of recharge cycles they experience. This is normal. If your operating time drops to half of the original life, contact the Customer Care Center to purchase a new battery.
- The batteries should last for a period of 3-5 years. When a battery needs replacement, you can order a new pack by calling our Customer Care Center at 1-800-732-0144. Please do not open the Collar Receiver or Remote Transmitter until you have received the replacement.
- Do not charge the Collar Receiver in areas with high temperature (100° F+).

FIT THE COLLAR RECEIVER

IMPORTANT: The proper fit and placement of the Collar Receiver is important for effective training. The Contact Points must have direct contact with your dog's skin.

To ensure a proper fit, follow these steps:

1. With your dog standing (3A), center the Collar Receiver so the Contact Points are underneath your dog's neck, touching the skin (3B). If your dog has a long or thick coat, you have two options to ensure consistent contact: either trim the hair around the Contact Points or switch to the longer Contact Points included with your system.
2. The Collar Receiver should fit snugly, yet loose enough to allow one finger to fit between the strap and your dog's neck (3C).
3. Allow your dog to wear the collar for several minutes, and then recheck the fit. Check the fit again as your dog becomes more comfortable wearing the Collar Receiver.



CARE AND CLEANING

To ensure the effectiveness of this product and the comfort and safety of your dog, check the fit of his collar frequently. This guide describes proper collar fitting. If you notice that your dog is experiencing skin irritation, discontinue use of the collar for a few days. If the condition persists beyond 48 hours, see your veterinarian.

TO PREVENT SKIN IRRITATION FROM OCCURRING:

- The Collar Receiver should not be worn for more than 8 hours out of every 24-hour period.
- Your dog's neck and the Contact Points must be washed weekly with a washcloth and mild hand soap, then rinsed thoroughly.

FIND THE BEST INTENSITY LEVEL FOR YOUR DOG

The SportHunter® 1825 has multiple intensity levels. This allows you to choose the stimulation that is best for your dog.

NOTE: Always start at the lowest level and work your way up.

For training efficiency, it is important to find the right intensity level for your dog. This is called the Recognition Level, at which your dog looks around in curiosity, or flicks his ears.

FINDING YOUR DOG'S RECOGNITION LEVEL:

NOTE: Every dog is different and you cannot predict where your dog's Recognition Level will be. Watch closely for any slight change in behavior that tells you your dog is feeling the stimulation.

1. With the Collar Receiver turned on and properly fitted to your dog, set the Remote Transmitter's Intensity Dial at Level 1 and press the Continuous Stimulation Button for 1 to 2 seconds.
2. If your dog shows no reaction to Level 1, go to Level 2 and repeat the process.

3. YOUR DOG SHOULD NOT VOCALIZE OR PANIC WHEN RECEIVING STIMULATION. IF THIS HAPPENS, THE STIMULATION LEVEL IS TOO HIGH AND YOU NEED TO GO BACK TO THE PREVIOUS LEVEL AND REPEAT THE PROCESS.
4. Once you find your dog's Recognition Level, this is the level you should use when you begin a training exercise.
5. If you have progressed to Level 8 while searching for your dog's Recognition Level and your dog continues to show no response, check to see if Collar Receiver is snug against your dog's neck. Then go back to Intensity Level 1 and repeat the process. If your dog still does not indicate he is feeling the stimulation, you have two options: you may either have to trim the hair beneath the Contact Points or switch to the longer Contact Points included in your system.

If after completing all of these steps your dog still does not indicate he is feeling the stimulation, please contact Customer Care Center at 1-800-732-0144.

CHANGING STIMULATION RANGES

The SportHunter® 1825 Collar Receiver comes with 3 stimulation ranges (low, medium and high). There are 8 stimulation levels within each range, with 1 being the lowest and 8 being the highest. The default range setting is 2 or medium.

To change the range of stimulation, follow these steps:

1. Make sure your unit is off.
2. Then turn the unit on by pressing and releasing the on/off button.
3. After the Indicator Light turns off and within 5 seconds, press and hold the on/off button for 3 seconds.
4. The Collar Receiver will then beep once and the Indicator Light will flash orange. This indicates **Low** stimulation range. If **Medium** or **High** are desired, continue to hold the button until the number of beeps/orange flashes equals the desired stimulation range shown in the chart below.
5. Release the button once the desired range is selected; the Collar Receiver will turn off.
6. Turn the unit back on. It will then beep according to the stimulation range selected in Step 4.

| | STIMULATION RANGE | DOG TEMPERAMENT |
|---------|-------------------|-----------------|
| 1 beep | Low | Mild |
| 2 beeps | Medium | Moderate |
| 3 beeps | High | Stubborn |

GENERAL TRAINING TIPS

BEFORE TRAINING YOUR DOG WITH THIS PRODUCT:

You will have the most success using this remote trainer if you always remember to teach a command before trying to reinforce the command with a remote trainer. We recommend that you read the enclosed Training Guide and watch the enclosed DVD before training with this remote trainer. Your training will be easier and proceed faster if you follow the guidelines in these teaching assistants. In addition, always keep the following training tips in mind:

- Eliminate one misbehavior or teach one obedience command at a time. If you move too fast with the training, your dog may become confused.
- Be consistent. Give your dog a tone, vibration and/or stimulation with each misbehavior.
- Do not overcorrect your dog. Use as few stimulations as possible to train your dog.

WWW.SPORTDOG.COM

- Restrict your dog from situations in which he has a history of misbehaving unless you can supervise him and use the SportHunter® 1825 for applying tone, stimulation or vibration.
- If you notice one situation in which your dog misbehaves repeatedly, set up this situation as a training session. This will dramatically increase your chances of success.
- If your dog has a timid reaction to the tone, stimulation or vibration (especially the first couple of times), do not be alarmed. Redirect his attention to a simple and appropriate behavior (i.e. a known command, such as “Sit”).
- Never use the SportHunter 1825 to correct or eliminate any form of aggressive behavior. If your dog exhibits such behavior, contact a professional trainer. Aggression in dogs is the result of many factors – it may be a learned behavior or it may be brought on as a result of fear. Another factor contributing to aggression in dogs is social dominance. Every dog is different.

At this point, your remote trainer is ready to use. The transmitter is factory set to mode 1, but you may wish to change the mode to fit your situation. See Step 5, for an explanation of mode options.

STEP :: 05

PROGRAM THE REMOTE TRANSMITTER

NOTE: The Transmitter is factory set to mode 1. The mode of the Remote Transmitter can be changed to fit your type or style of training.

TO CHANGE THE MODE:

1. Referring to the following tables, adjust the Intensity Dial and Toggle Switch to the mode you want to use.
2. Turn the Remote Transmitter over and remove the belt clip (if attached).
3. Using a pen or the tine on the buckle of your collar strap, depress and release the mode button. When the mode button is pressed, the Transmitter Indicator Light will be solid in color. When it is released, it will flash the mode selected.



For example, if mode 5 is desired, adjust the Intensity Dial to Level 5. Once the mode button has been depressed, the Transmitter Indicator Light will be solid, and once the mode button is released, the Transmitter Indicator Light will flash 5 times. However, if you select mode 8 (ID Code) in the **UP** position or mode 2 in the **DOWN** position, the light will remain solid in color once the mode button is released.



TOGGLE SWITCH IN THE **UP** POSITION



TOGGLE SWITCH IN THE **DOWN** POSITION

TOGGLE SWITCH IN THE UP POSITION

| MODE | UPPER BUTTON FUNCTION | LOWER BUTTON FUNCTION | SIDE BUTTON FUNCTION | TOGGLE SWITCH (up/down) | NUMBER OF DOGS |
|-------------|--|---|--|-------------------------|----------------|
| 1 | Continuous stimulation (Level set by intensity dial) | Momentary stimulation (Level set by intensity dial) | Tone only | Dog 1 / Dog 2* | 2 |
| 2 | Continuous stimulation (Level set by intensity dial) | Low continuous stimulation (Level set by intensity dial) | Tone only | Continuous/ Momentary | 1 |
| 3 | Continuous stimulation (Level set by intensity dial) | Continuous stimulation (Level set by intensity dial) | Continuous stimulation (Level set by intensity dial) | Dogs 1-3 / Dogs 4-6** | 6 |
| 4 | Continuous stimulation (Level set by intensity dial) | Tone only | N/A | Dog 1 / Dog 2* | 2 |
| 5 | Continuous stimulation (Level set by intensity dial) | Momentary stimulation (Level set by intensity dial) | N/A | Dog 1 / Dog 2* | 2 |
| 6 | N/A | N/A | N/A | N/A | N/A |
| 7 | Continuous stimulation followed by a ¼ second delay tone (Level set by intensity dial) | Momentary stimulation followed by a ¼ second delay tone (Level set by intensity dial) | Continuous stimulation + 2 | Dog 1 / Dog 2* | 2 |
| 8 (ID Code) | N/A | N/A | See below*** | Up position | N/A |

NOTE: Modes 1, 3, 4, 5 and 7 provide 8 levels of stimulation, which correspond to the setting of the Intensity Dial.

Mode 2 provides more “increments” to choose from – a total of 16 levels of stimulation. For example, in mode 2 with the Intensity Dial set at 2, the lower button provides level 3 of 16 and the upper button provides level 4 of 16.

* For two-dog operation setup refer to Step 7 on page 13.

** For three and six-dog operation setup refer to Step 8 on page 14.

*** An ID Code is the signal identification between the Remote Transmitter and Collar Receiver. Each is programmed in 1 of 4,000 ID Codes from the factory. In the rare event that a Remote Transmitter is sending a signal to more than one Collar Receiver, you can change the Remote Transmitter’s ID Code to prevent this from happening. There are 64 programmable ID Codes available.

TO MANUALLY PROGRAM THE REMOTE TRANSMITTER’S ID CODE FOLLOW THESE STEPS:

1. Turn the intensity dial to level 8, flip the toggle switch up, and then press and release the mode button on the back of your Remote Transmitter. This does not change the mode, so the current mode will still be active after the ID change is complete.
2. Once the mode button is released, the green indicator light will illuminate and stay on for 15 seconds.
3. While the green light is on, turn the intensity dial to select the 1st digit of the ID and then press and release the side button. The green light will flash rapidly confirming selection.

- Again, while the green light is on, turn the intensity dial to select the 2nd digit of the ID and then press and release the side button. The green light will flash rapidly confirming selection. The 2nd digit is optional, and if not desired, just wait until the green light turns off and refrain from pressing the side button.
- At the end of 15 seconds, or after the second press of the side button, the green light will turn off and the ID/frequency of the unit will be updated. At this point, the unit will be in the same mode it was in prior to setting the ID.
- Upon changing the ID Code, you will need to match the Collar Receiver to the Remote Transmitter. See Step 6 on page 13.

NOTE: If you press the side button only once (skipping Step 4) the ID is still a two digit ID. The left digit is defaulted to 1. For example, if you selected 6 in Step 3 and pressed the button only once, the ID you get will be 16.

To return the unit to the factory ID either remove the battery or follow these steps:

- Turn the intensity dial to level 8, flip the toggle switch up, and then press and release the mode button on the back of your Remote Transmitter. This does not change the mode, so the current mode will still be active after the ID change is complete.
- Do not press any buttons and wait until the green indicator light turns off.
- You will now need to match the Collar Receiver to the Remote Transmitter. See Step 6 on page 13.

TOGGLE SWITCH IN THE DOWN POSITION

| MODE | UPPER BUTTON FUNCTION | LOWER BUTTON FUNCTION | SIDE BUTTON FUNCTION | TOGGLE SWITCH (up/down) | NUMBER OF DOGS |
|------|--|--|---------------------------------------|-------------------------|----------------|
| 1 | Continuous stimulation (Level set by intensity dial) | Momentary stimulation (Level set by intensity dial) | Vibration only | Dog 1 / Dog 2* | 2 |
| 2 | Continuous stimulation (Level set by intensity dial) | Low Continuous stimulation (Level set by intensity dial) | Programmable Continuous stimulation** | Dog 1 / Dog 2* | 2 |
| 3 | Continuous stimulation (Level set by intensity dial) | Tone w/ one second delay Continuous stimulation | Vibration only | Dog 1 / Dog 2* | 2 |
| 4 | Continuous stimulation (Level set by intensity dial) | Low Continuous stimulation (Level set by intensity dial) | Vibration only | Continuous/ Momentary | 1 |
| 5 | Dog 1 (Level set by intensity dial) | Dog 2 (Level set by intensity dial) | Dog 3 (Level set by intensity dial) | Continuous/ Vibration | 3 |
| 6 | Continuous stimulation (Level set by intensity dial) | Tone only | Vibration only | Dog 1 / Dog 2* | 2 |
| 7 | Continuous stimulation (Level set by intensity dial) | Vibration only | N/A | Dog 1 / Dog 2* | 2 |
| 8 | N/A | N/A | N/A | N/A | N/A |

NOTE: Modes 1, 3, 5, 6 and 7 provide 8 levels of stimulation, which correspond to the setting of the Intensity Dial.

Modes 2 and 4 provide more "increments" to choose from – a total of 16 levels of stimulation. For example, in mode 2 with the Intensity Dial set at 2, the lower button provides level 3 of 16 and the upper button provides level 4 of 16.

- * For Two-Dog operation setup refer to Step 7 below.
- ** After selecting mode 2 and while the green indicator light is still solid in color, turn the intensity dial to the desired Continuous Stimulation level and press the side button to set the level. The green light will quickly flash acknowledging your selection. For example, if you turned the intensity dial to 3, the side button on your Remote Transmitter will transmit Continuous Stimulation at level 3 when pressed. If no level is selected after 15 seconds, it will default to level 8.

STEP :: 06

MATCH THE COLLAR RECEIVER AND REMOTE TRANSMITTER

To reset the Collar Receiver to work with a new Remote Transmitter or to reprogram a new Collar Receiver to work with your existing Remote Transmitter:

- Turn the Collar Receiver off.
- Press and hold the On/Off Button. The Receiver Indicator Light will come on, then turn off after 5-6 seconds. If the On/Off Button is released too early, the Receiver Indicator Light will begin flashing as normal. If this occurs, start over and repeat from **A**.
- After the Receiver Indicator Light has turned off, release the On/Off Button.
- Press and hold the Upper Button on the Remote Transmitter until the Receiver Indicator Light flashes 5 times. You may need to hold both units 2-3 feet from each other before this occurs. Once the Receiver Indicator Light has flashed 5 times, the Collar Receiver has been reset and will begin flashing as normal. If the Receiver Indicator Light does not flash 5 times, start over and repeat from **A**.

STEP :: 07

PROGRAM THE SYSTEM FOR TWO-DOG OPERATION

SportDOG™ Collar Receivers can be set to respond to either the **up** or **down** toggle switch position. A SportDOG Add-A-Dog® Collar Receiver must be purchased to train a second dog in two-dog mode. **Please refer to the back cover for compatible Add-A-Dog Collar Receivers for this system.**

- Program the Remote Transmitter to mode 1, 4, 5, or 7 in the toggle **orange/up** position or mode 1, 2, 3, 6 or 7 in the toggle **black/down** position (see pages 11-12).
- Then flip the toggle switch to the **orange/up** position to program the first Collar Receiver.
 - Turn the Collar Receiver off.
 - Press and hold the On/Off Button. The Receiver Indicator Light will come on, then turn off in 4-5 seconds. If the On/Off Button is released too early, the Receiver Indicator Light will begin its normal flashing. If this occurs, start over and repeat from **A**.
 - After the Receiver Indicator Light has turned off, release the On/Off Button.
 - Press and hold the Upper Button on the Remote Transmitter until the Receiver Indicator Light flashes 5 times.
- Program the second Collar Receiver the same way using **A** through **D** above, but with the toggle switch to the **black/down** position.



TOGGLE SET TO ORANGE/UP FOR DOG 1 OR TOGGLE SET TO BLACK/DOWN FOR DOG 2

PROGRAM THE SYSTEM FOR THREE AND SIX-DOG OPERATION

A SportDOG™ Add-A-Dog® receiver(s) must be purchased to train additional dogs.
Please refer to the back cover for compatible Add-A-Dog Collar Receivers for this system.

THREE DOG OPERATION

1. Program the Remote Transmitter to mode 5 in the toggle switch **down** position (see page 12).
2. Then flip the toggle switch to the **orange/up** position.
3. Program the first Collar Receiver:
 - A.** Turn the Collar Receiver off.
 - B.** Press and hold the On/Off Button. The Receiver Indicator Light will come on, then turn off in 4-5 seconds. If the On/Off Button is released too early, the Receiver Indicator Light will begin its normal flashing. If this occurs, start over and repeat from **A.**
 - C.** After the Receiver Indicator Light has turned off, release the On/Off Button.
 - D.** Press and hold the **Upper Button** on the Remote Transmitter until the Receiver Indicator Light flashes 5 times. You may need to hold both units 2-3 feet from each other. If the Receiver Indicator Light does not flash 5 times, start over and repeat from **A.**
4. Program the second Collar Receiver using **A** through **D** above, but using the **Lower Button** in place of the Upper Button.
5. Program the third Collar Receiver using **A** through **D** above, but using the **Side Button** in place of the Lower Button.

SIX DOG OPERATION

Program the Remote Transmitter to mode 3 in the toggle switch **up** position (see page 11).

For six dog operation repeat above steps 3, 4 and 5 with the toggle switch in the **up** position for dogs 1, 2, and 3; then flip the toggle switch to the **down** position, and repeat above steps 3, 4 and 5 for dogs 4, 5 and 6.

FREQUENTLY ASKED QUESTIONS

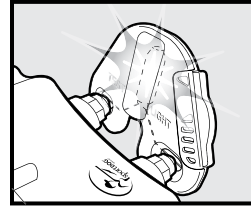
| | |
|---|--|
| Is the stimulation safe for my dog? | While Continuous and/or Momentary stimulation may be unpleasant, it is harmless to your dog. Electronic training devices require interaction and training from the owner to achieve desired results. |
| How old does a dog have to be before using the SportHunter® 1825? | Your dog should be able to learn basic obedience commands such as "Sit" or "Stay." The Collar Receiver may be too large for dogs under 8 pounds. |
| Once my dog is trained and has been obeying my commands, will my dog have to continue to wear the Collar Receiver? | Your dog may need to wear the Collar Receiver from time to time for reinforcement. Also, many hunters keep the Collar Receiver on their dogs while hunting for maximum control. |
| Is the Collar Receiver waterproof? | Yes. If the rechargeable battery pack ever needs to be replaced, make sure the o-ring and o-ring groove are free from dirt and debris. |
| Can my Collar Receiver be used around salt water? | If the Collar Receiver is used in or around salt water, the Collar Receiver should be rinsed with fresh water following each use. |
| Can I use the SportHunter 1825 with more than one dog? | Yes, the SportHunter 1825 is expandable to a maximum of 6 dogs. SportDOG™ Add-A-Dog® Collar Receivers must be purchased. Please refer to back cover for a list of compatible Collar Receivers. |
| Can I use the SportHunter 1825 on aggressive dogs? | We do not recommend any of our products to be used on aggressive dogs. We recommend you contact your local veterinarian or professional trainer to determine if your dog might be aggressive. |
| Will I get exactly one mile of range with the SportHunter 1825? | The range you get with your SportHunter 1825 will vary according to terrain, weather, vegetation, as well as transmission from other radio devices. To get the maximum amount of range, please refer to "How the System Works" section of this guide. |
| How long can I continuously deliver stimulation to my dog? | The maximum amount of time you can press the Continuous Stimulation Button and deliver stimulation to your dog continuously is 10 seconds. After 10 seconds, the Remote Transmitter will "time-out," and the Continuous Stimulation Button must be released and pressed again. |
| What do I do if my dog's neck becomes red and irritated? | This condition is due to the Contact Points irritating the skin. Discontinue use of the Collar Receiver for a few days. If the condition persists beyond 48 hours, see your veterinarian. Once the skin returns to normal, resume use, and monitor the skin condition closely. |
| The Intensity Dial seems difficult to rotate. Is this normal? | Yes. This prevents accidental changes in intensity and encourages an optimal waterproof seal. The knob will "break in" and be slightly easier to turn as you use it. |
| Can I attach a leash to the SportHunter 1825? | DO NOT attach a leash to the SportHunter 1825. You may put a separate non-metallic collar on your dog's neck and attach a leash. Be sure the extra collar does not interfere with the Contact Points. |
| Can I program my SportHunter 1825 to work with my other SportDOG Brand® systems? | No, because the SportHunter 1825 operates at a different frequency it is not backwards compatible. |

TROUBLESHOOTING

The answers to these questions should help you solve any problem you have with this system. If they do not, please contact the Customer Care Center at 1-800-732-0144 or visit our website at www.sportdog.com.

| | |
|--|--|
| <p>My dog is not responding when I press a button.</p> | <ul style="list-style-type: none"> • Check to see if the Collar Receiver has been turned on. • If your range has reduced from the first time you have used it, please check to see if the battery is low in either the Remote Transmitter or Collar Receiver. • Many factors can impact the range you have with the SportHunter® 1825. For a list of these factors, please refer to "How the System Works". • You can verify the Collar Receiver is delivering stimulation to your dog by placing the test light, enclosed in your kit, on the Collar Receiver. Please refer to the "Test Light Instructions" section for details. • Increase the Intensity Dial. Refer to "Find the Best Intensity Level for Your Dog" for more information. • Increase the Stimulation Range. Refer to "Changing Stimulation Ranges" for more information. • Make sure the Collar Receiver's Contact Points are placed snugly against your dog's skin. Refer to "Fit the Collar Receiver" for more information. • You may need to switch to the longer Contact Points included with your system or trim the hair beneath the Contact Points. • If you notice your operating time dropping to about half the original time, your Collar Receiver battery needs to be replaced. Contact the Customer Care Center to purchase a new one. |
| <p>The Collar Receiver will not turn on.</p> | <ul style="list-style-type: none"> • Make sure the Collar Receiver has been charged. The Collar Receiver will charge in 2 hours. |
| <p>The Collar Receiver is not responding to the Remote Transmitter.</p> | <ul style="list-style-type: none"> • Verify the Collar Receiver has been turned on. Refer to "Turning the Collar Receiver On and Off". • Refer to "Match the Collar Receiver." |

TEST LIGHT INSTRUCTIONS



1. Turn the Collar Receiver on.
2. Hold the Test Light Contacts to the Contact Points.
3. Press a Stimulation Button on the Remote Transmitter.
4. The Test Light will flash.
NOTE: At higher Stimulation Levels, the Test Light will flash brighter.
5. Turn the Collar Receiver off.

Save the Test Light for future testing.

NOTE: If the Test Light does not flash, recharge the battery and re-test. If the Test Light still does not flash, contact the Customer Care Center at 1-800-732-0144.

TERMS OF USE AND LIMITATION OF LIABILITY

1. TERMS OF USE

This Product is offered to you conditioned upon your acceptance without modification of the terms, conditions and notices contained herein. Usage of this Product implies acceptance of all such terms, conditions, and notices.

2. PROPER USE

This Product is designed for use with dogs where training is desired. The specific temperament of your dog may not work with this Product. We recommend that you not use this Product if your dog is less than 8 pounds or if your dog is aggressive. If you are unsure whether this is appropriate for your dog, please consult your veterinarian, certified trainer or contact our Customer Care Center at 1-800-732-0144.

Proper use includes reviewing the entire Operating and Training Guide provided with your Product and any specific Caution statements.

3. NO UNLAWFUL OR PROHIBITED USE

This Product is designed for use with dogs only. This dog training device is not intended to harm, injure, or provoke. Using this Product in a way that is not intended could result in violation of Federal, State or local laws.

4. LIMITATION OF LIABILITY

In no event shall Radio Systems® Corporation be liable for any direct, indirect, punitive, incidental, special or consequential damages, or any damages whatsoever arising out of or connected with the use or misuse of this Product. Buyer assumes all risks and liability from the use of this Product.

5. MODIFICATION OF TERMS AND CONDITIONS

Radio Systems Corporation reserves the right to change the terms, conditions and notices under which this Product is offered.

FCC COMPLIANCE

This device complies with part 15 of the FCC Rules. Operation is subject to the following two conditions: (1) This device may not cause harmful interference, and (2) this device must accept any interference received, including interference that may cause undesired operation.

This equipment has been tested and found to comply with the limits for a Class B digital device, pursuant to part 15 of the FCC Rules. These limits are designed to provide reasonable protection against harmful interference in a residential installation. This equipment generates, uses and can radiate radio frequency energy and, if not installed and used in accordance with the instructions, may cause harmful interference to radio communications. However, there is no guarantee that interference will not occur in a specific installation. If interference does occur to radio or television reception, which can be determined by turning the equipment off and on, the user is encouraged to try to correct the interference by one or more of the following measures:

- Reorient or relocate the receiving antenna.
- Increase the separation between the equipment and the receiver.
- Connect the equipment to an outlet on a circuit different from that to which the receiver is connected.
- Contact customer service or an experienced radio/TV technician for assistance.

Caution: Unauthorized changes or modifications to the equipment may violate FCC regulations and could void the user's authority to operate the equipment.

BATTERY DISPOSAL

ATTENTION: This device contains a Lithium-Ion battery; never incinerate, puncture, deform, short-circuit, or charge with an inappropriate charger. Fire, explosion, property damage, or bodily harm may occur if this warning is not followed.

This system operates on two Li-Ion battery packs (240mAh capacity for the Collar Receiver and 550mAh capacity for the Remote Transmitter). Only replace with battery received from calling the Customer Care Center at 1-800-732-0144.

Separate collection of spent batteries is required in many regions; check the regulations in your area before discarding spent batteries. Please see below for instructions on how to remove the battery from the product for separate disposal. If you wish to ship us your spent batteries for disposal, contact the Customer Care Center.

AT END OF PRODUCT LIFE, USE THESE BATTERY REMOVAL INSTRUCTIONS FOR FINAL DISPOSAL (DO NOT OPEN THE COLLAR RECEIVER OR REMOTE TRANSMITTER UNTIL YOU HAVE RECEIVED THE REPLACEMENT):

- Using a #1 Phillips screwdriver for your Remote Transmitter and/or a 3/32 Allen wrench for your Collar Receiver, remove the case screws.
- Remove the case back or cover.
- Remove the old battery pack. *NOTE: When removing the old battery pack, care must be taken when gripping the connector firmly to avoid damaging the wires. Shorting the battery wires may cause fire or explosion.*

NOTE: These instructions are not valid for repair or battery replacement. Replacing the battery with a battery not specifically approved by Radio Systems® Corporation may cause fire or explosion. Please call the Customer Care Center at 1-800-732-0144 to avoid invalidating your warranty.

This product is protected by the following patents:

U.S. Patent Numbers: 6,901,883; 7,017,524; D545,791; 7,420,136; D573,564; 6,184,790 and other patents pending.



SPORTDOG.COM

SPORTDOG / ADD-A-DOG®
Collar Receivers

WETLANDHUNTER®
SDR::AW ADD-A-DOG®



SPORHUNTER®
SDR::A ADD-A-DOG®

NOTE: SDR-FS, SDR-FH, SDR, SDR-CH, SDR-FC, SDR-BEEP AND SDR-H ADD-A-DOG COLLARS ARE NOT COMPATIBLE WITH THIS SYSTEM.

©2008 RADIO SYSTEMS CORPORATION
Radio Systems® Corporation • 10427 Electric Avenue • Knoxville, TN 37932 • 1-800-732-0144
400-1053/3